

THERMO-BLO MOLD COOLER

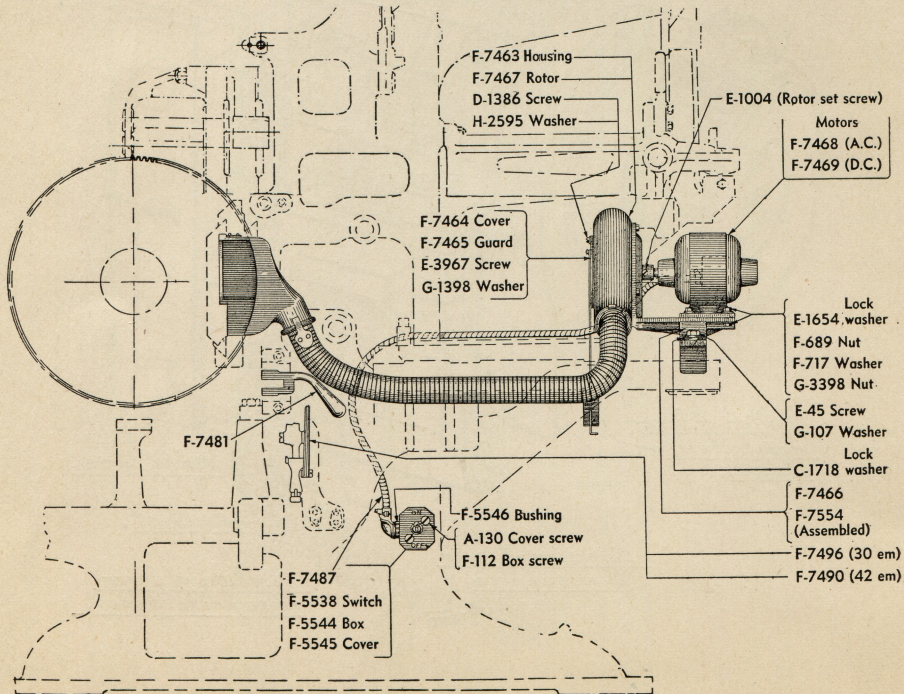
The diagrammatic views below and opposite show the mounting of this attachment on current Linotypes, as seen from in front and from the right side of the machine. The manner and point of attachment of the motor bracket and the length of blower air tube vary somewhat depending upon the model involved. The air tube is detachable from the nozzle for pulling out the mold

slide beyond the normal operating distance.

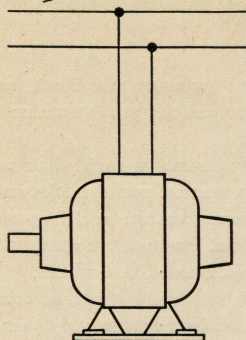
The volume of air delivered at the nozzle may be controlled by opening or closing the intake shutter which is operated by the lever extending through to the right front of the base. There are four stages, their suggested use being as follows, subject to change as found necessary to suit individual operating conditions:

- Full open** — For continuous casting of display or large body slugs
- 3/4 open** — For interrupted casting of display or large body slugs
— For continuous casting of recessed or medium body slugs
- 1/2 open** — For interrupted casting of recessed or medium body slugs
— For continuous casting of small body slugs
- 1/4 open** — For interrupted casting of small body slugs

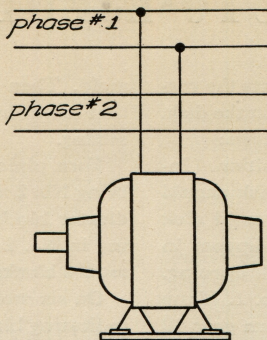
View From Front of Machine



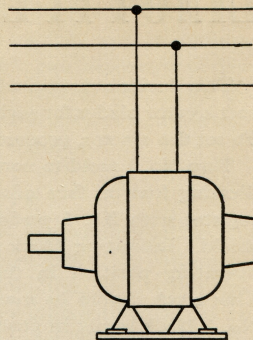
Single Phase



Two Phase



Three Phase



All Alternating Current Motors for the Thermo-Blo are of the single phase type and may be connected, as shown above, to a single phase, a two phase or a three phase

circuit. For single phase, connect to the two wires of the circuit. For two phase, connect to the two wires of either phase. For three phase, connect to any two of the three wires.

View From Right Side of Machine

