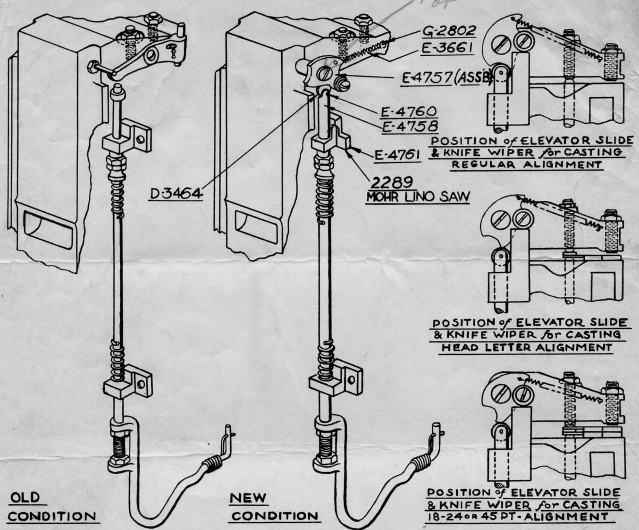


E-2147  
open lever screw



MEANS TO AUTOMATICALLY REGULATE THE STROKE OF THE KNIFE WIPER WHEN CHANGING THE CASTING POSITION

An improved Knife Wiper Operating Lever has been designed providing complete wiping of the side knives in all positions automatically and independent of the First Elevator Slide Filling Piece.

APPLIED IN FACTORY TO MODELS

Blue Streak (30em) Models 5-29-30-31-32-33-34-35-36

OUTSTANDING MODELS

- (1) Can be applied to all outstanding 30em machines equipped with downstroke knife wiper by substituting 1 D-3464, 1 E-3661, 1 E-4757, 1 E-4758, 1 E-4760, 1 E-4761 and 2 G-2802 (List 369).
- (2) Complete downstroke knife wiper with new style operating lever to 30em machines equipped with upstroke knife wiper (List 388).

When applied to machines using Mohr Lino Saw obtain (1) Upper (R.H.) First Elevator Slide G46 #2289 from Mohr Lino Saw Company.

First applied to Model 5 Serial No. 56594

MERGENTHALER LINOTYPE COMPANY, N.Y.