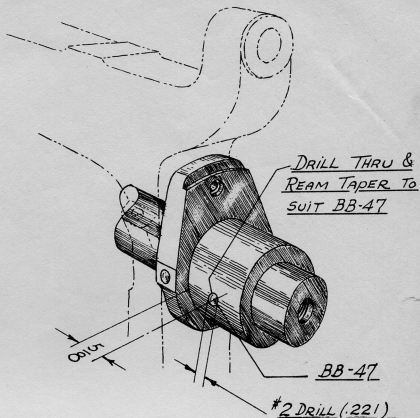


Old Condition



New Condition

MOLD DISK PINION FLANGE

An additional Taper Pin through the Hub of the Mold Disk Pinion Flange and Shaft has been added to provide for a stronger drive.

APPLIED IN FACTORY TO MODELS

Model 5F-29-30-31-32-33-34-35-36 Machines.

OUTSTANDING MODELS

Can be applied to all Outstanding Machines by locating and adding 1 of BB-47 as shown.