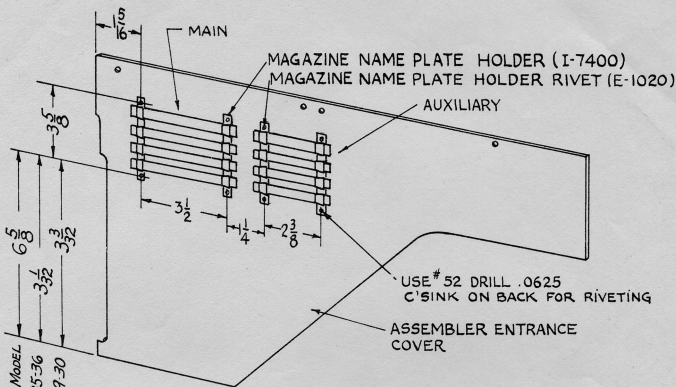
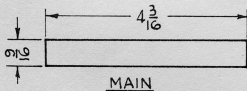


LINOTYPE IMPROVEMENT SHEET

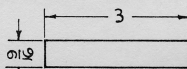
NO. 290



NEW CONDITION



MAIN



AUXILIARY

PAPER LABELS FOR  
FONT IDENTIFICATION  
AND LOCATION

MATRIX INDICATOR

A simplified method has been adopted for holding Font Identification Labels in the form of paper strips on the Assembler Entrance Cover.

APPLIED IN FACTORY TO MODELS

Models 5, 29, 30, 31, 32, 33, 34, 35, 36 Machines.

OUTSTANDING MODELS

Can be applied to outstanding Model 5, 8, 14, 25, 26, 27, 28, 29, 30, 31, 32 by locating and drilling holes as shown and adding 2 of I-7400 Holders and 4 of E-1020 Rivets (For non-Auxiliary Machines) or 4 of I-7400 Holders and 8 of E-1020 Rivets (For Auxiliary Model Machines).

First applied to Model 31(4)(72-90) - Serial #55484

MERGENTHALER LINOTYPE COMPANY, Brooklyn, N.Y.

October 10, 1949

No. 290

Printed in U.S.A.