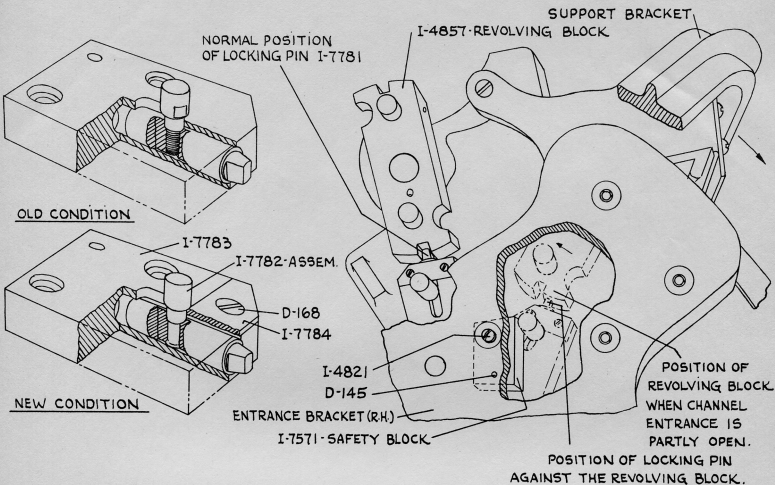


LINOTYPE IMPROVEMENT SHEET

No. 291



REVOLVING CHANNEL ENTRANCE SAFETY BLOCK MODEL 31(4)(72-90), 33(4)(72-90), 34(4)(72-90)

A safety block I-7571 has been added to the inside surface of the channel entrance bracket, right hand, to prevent the channel entrance from being closed when partially revolved.

If the channel entrance is left partially open and the revolving block I-4857 has started to turn, the locking pin I-7781 will leave the slot in the block I-4857 and lodge underneath. With the locking pin I-7781 in this position the safety block I-7571 acts as a stop preventing the channel entrance from being closed until the revolving block I-4857 has made the complete turn.

By opening the channel entrance all the way the locking pin I-7781 will latch back into normal position out of the way of safety block I-7571 permitting it to clear the impedance, thereby insuring the correct location of the channel entrance when closing and eliminate possible damage to the pi chute.

APPLIED IN FACTORY TO MODELS

Blue Streak Models 31(4)(72-90), 33(4)(72-90), 34(4)(72-90)

OUTSTANDING MODELS

Can be applied to outstanding Models 8, 14, 31(4)(72-90), 33(4)(72-90), 34(4)(72-90) by adding 1 of I-7571, 1 of I-4821 and 1 of D-145. See Mailing Sheet #526.

First applied to Model 31(4)(72-90) - Serial #55471

MERGENTHALER LINOTYPE COMPANY, Brooklyn, N.Y.

October 13, 1949

No. 291

Printed in U.S.A.