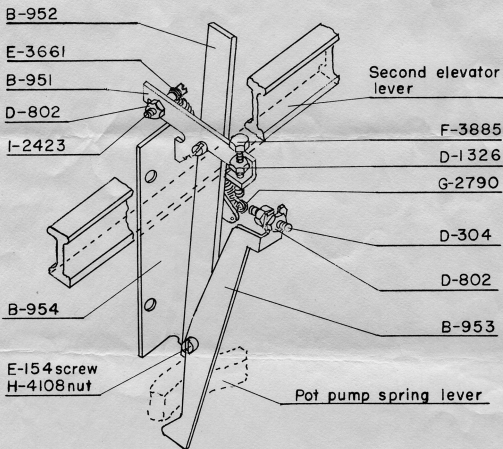


LINOTYPE IMPROVEMENT SHEET

NO. 310



B-955 Assembly

NO CAST SAFETY

A Safety Mechanism has been designed to stop the Second Elevator from descending to transfer position, thereby, preventing the machine from completing its cycle if for any cause a slug were not cast. This arrangement is advantageous on Teletypesetter equipped machines.

APPLIED IN FACTORY TO MODELS

As optional equipment on Comet Machines equipped with Teletypesetter.

OUTSTANDING MODELS

Can be applied to all outstanding Teletype Comets. Use Mailing Sheet #632.
First applied to Comet machine - Serial #911.

MERGENTHALER LINOTYPE COMPANY, Brooklyn, N.Y.

May 29, 1953

No. 310

Printed in U.S.A.