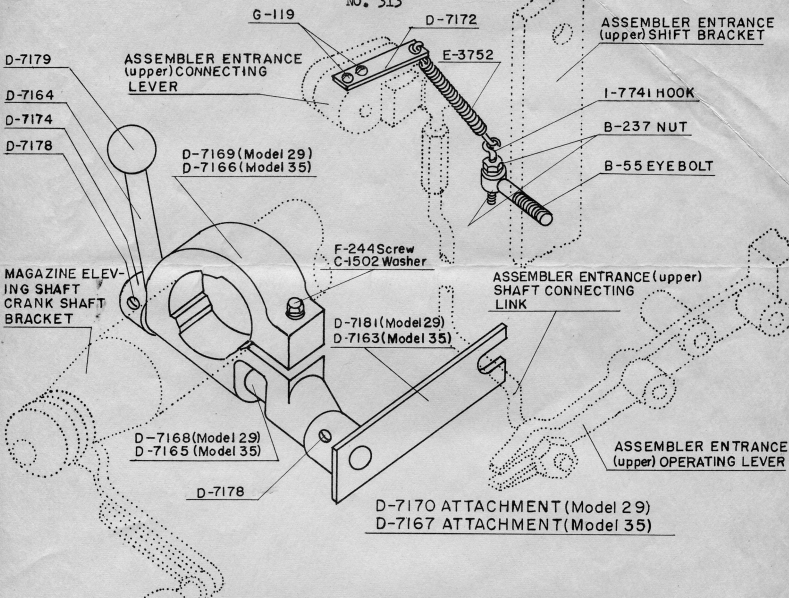


R. J. Comstock

LINOTYPE IMPROVEMENT SHEET

NO. 313



MANUALLY OPERATED OSCILLATING FRONT SHIFT

A manual shift device has been designed for outstanding Model 29 and 35 Linotypes to replace the Power Driven Oscillator Shift Unit of the type which is controlled by a lever extending from the Assembler Front.

The components of the manual shift device have been designed for assembly on the Magazine Elevating Crank Shaft Handle Bracket to operate in connection with the Oscillating Shift connecting Link and Operating Lever.

OUTSTANDING MODELS

Can be applied to all outstanding Model 29 and 35 Linotypes equipped with the Lever controlled Power Driven Oscillator Shift Unit.
See Mailing Sheet No. 640.

MERGENTHALER LINOTYPE COMPANY, Brooklyn, N.Y.

August 30, 1954.

No. 313

Printed in U.S.A.