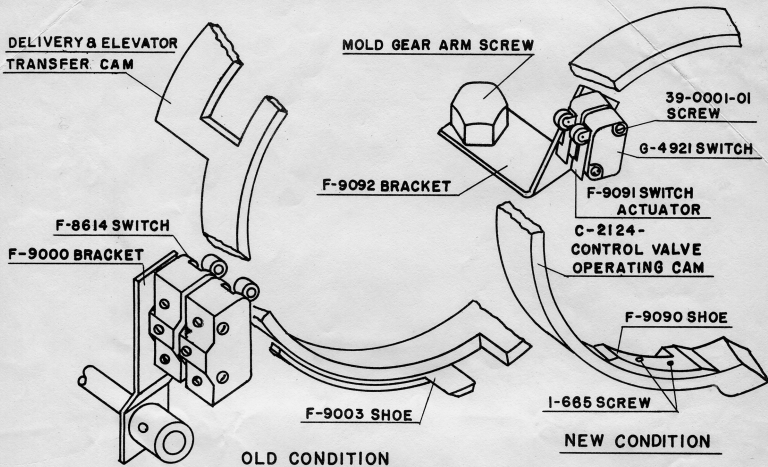


LINE TYPE IMPROVEMENT INFORMATION SHEET

NO. 328



ACTUATING AND CLEARING SWITCHES (ELECTRIC HYDRAQUADDER)

The Actuating & Clearing Switches have been relocated inside the Electric Hydraquadder Control Valve Operating Cam, and are operated by a shoe on the inside of the Operating Cam. This location insures safety from accidental contact and the Switches are also isolated from machine vibrations.

APPLIED IN FACTORY TO MODELS

To all Models equipped with Electric Hydraquadders.

OUTSTANDING MODELS

Can be applied to all outstanding Models equipped with Electric Hydraquadder by applying parts - Attachment F-9093. Use Mailing Sheet #653.

First applied to Model Comet, Serial #2466

MERGENTHALER LINE TYPE COMPANY, Brooklyn, N.Y.

May 7, 1958

No. 328

Printed in U.S.A.