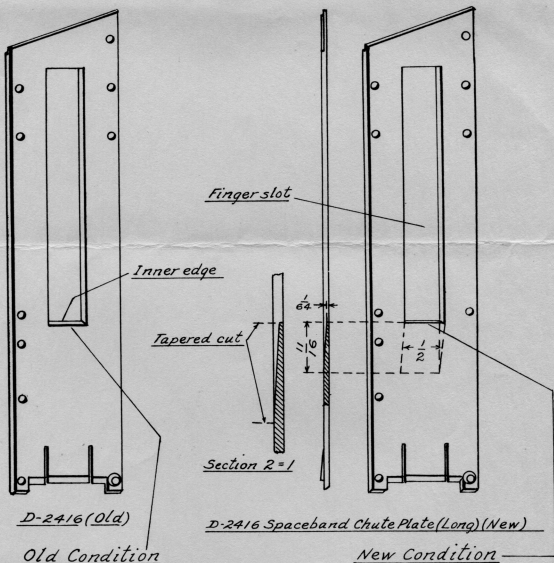


*Mr. Anderson*

LINOTYPE IMPROVEMENT INFORMATION SHEET

NO. 252



SPACEBAND CHUTE PLATE (LONG)

A tapered cut has been added at the bottom of the finger slot in the spaceband chute plate (long). This cut will eliminate the possibility of spacebands striking the inner edge of the slot and becoming injured.

APPLIED IN FACTORY TO MODELS

All new models of 28-29-30-31-32-33 Series.

OUTSTANDING MODELS

Can be applied to outstanding models by substituting new D-2416 or reworking spaceband chute plate as figures indicate.

First applied to Model 31(4)(90), Serial #53266.

MERGENTHALER LINOTYPE COMPANY, Brooklyn, N.Y.

April 11, 1939

NO. 252

Printed in U. S. A.