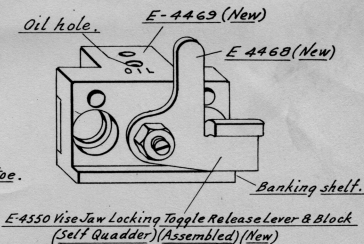
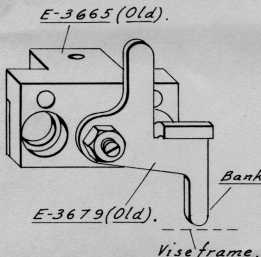
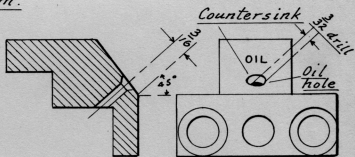
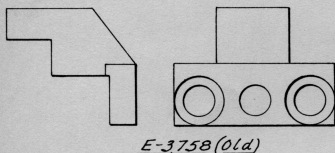


*Mr. Anderson*



30 Em.



E-3758 (Old)

E-3758 Vise Jaw Locking Toggle Slide Guide (Front) (Self Quadder) (New)

Old Condition.

New Condition.

42 Em.

30 EM - VISE JAW LOCKING TOGGLE RELEASE LEVER AND VISE JAW LOCKING TOGGLE ADJUSTING SCREW BLOCK (SELF QUADDER)

The banking toe of the release lever has been removed. A banking shelf for the release lever and an oil hole for lubricating the toggle has been added to the adjusting screw block. This construction eliminates the possibility of battering down the toe of the release lever and wearing a hole in the rough casting, thus maintaining the proper setting.

42 EM - VISE JAW LOCKING TOGGLE SLIDE GUIDE (FRONT)

An oil hole has been added for lubricating the toggle.

APPLIED IN FACTORY TO MODELS

All new Models of 28-29-30-31-32-33 equipped with self quadder.

OUTSTANDING MODELS

Can be applied to outstanding 30em machines, equipped with self quadder containing vise jaw locking toggle release lever by substituting E-4550. For 42em machines equipped with self quadder containing vise jaw locking toggle release lever, by reworking as figures indicate or substituting new E-3758. See Mailing Sheet #482

First applied to Model 33, Serial #53098.

MERGENTHALER LINOTYPE COMPANY, Brooklyn, N.Y.

May 2, 1939