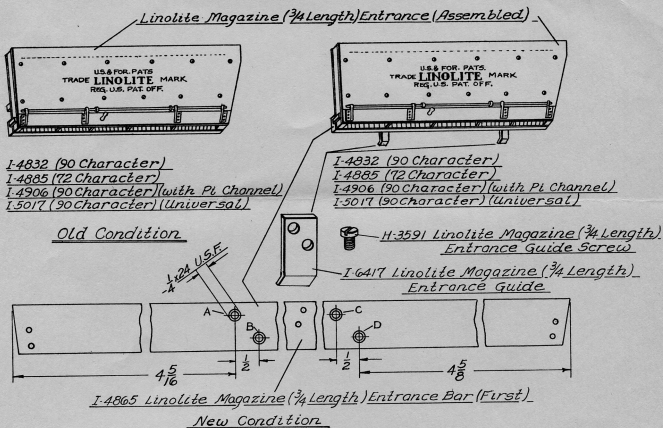


LINOLITE IMPROVEMENT INFORMATION SHEET

NO. 254

SUPERSEDES NO. 254 DATED MAY 3, 1939.



THREE QUARTER LENGTH MAGAZINES

Two guide pieces have been added to the lower front end of the three quarter length entrance magazine. These pieces act as guides when the three quarter length magazine is put on the machine, and will prevent damage to the back end of the magazine and the front end of the entrance magazine.

Easy replacement of magazines and free circulation of matrices is thereby insured.

APPLIED IN FACTORY TO MODELS

All new Models of 29-30-31-32 Series specifying three quarter length magazines.

OUTSTANDING MODELS

Can be applied to outstanding models equipped with three quarter length entrance magazines as part numbers designate by substituting new I-4865 or reworking the first bar by drilling four holes, a-b-c-d with #4, .209 drill and tap 1/4x24 U.S.F. as dimensions indicate. Add two each of H-3591, I-6417.

MERGENTHALER LINOLITE COMPANY, Brooklyn, N. Y.