

INSTRUCTIONS FOR APPLYING LINOTRONIC CONTROL
MOUTHPIECE PROBE 41-2014-01

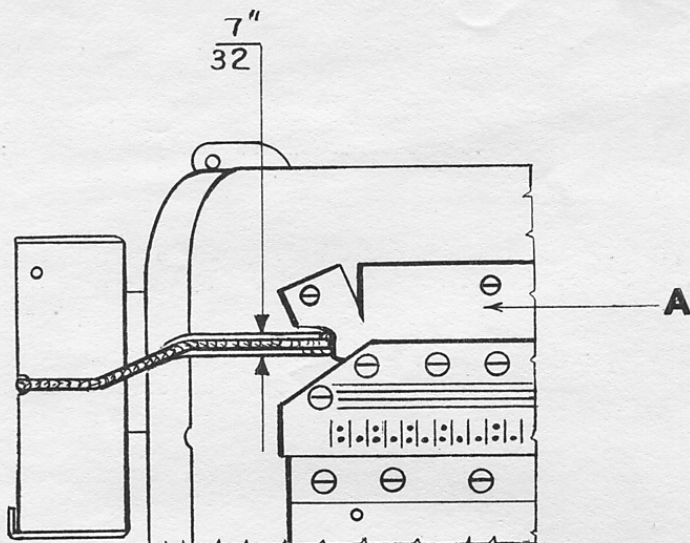
Sales-Service

Mergenthaler Linotype Company

Brooklyn 5, N.Y.

February, 1960

Service Instruction No. 20



Remove guard A and place mouthpiece probe in its groove in back of mouthpiece. Do not pack with asbestos since this may affect control of mouthpiece temperature. If a Comet type electric pot is used, insert probe in hole in front of mouthpiece heater. If it is difficult to put in the probe from the left of the mouth heater, insert lead wires in the hole at right of heater and pull the probe through from right to left.

If it is necessary to tap the probe, use care and tap it lightly because the platinum coil of wire inside the probe is encased in pyrofax glass which will break if handled roughly.

The metal covering over the lead wires should fit into the slot in the pot cover without forcing. If the slot is not wide enough, enlarge to 7/32 inches as shown.

The wire leads from the mouthpiece probe are fastened to terminals 7 and 8 on the terminal strip in the wire junction box.